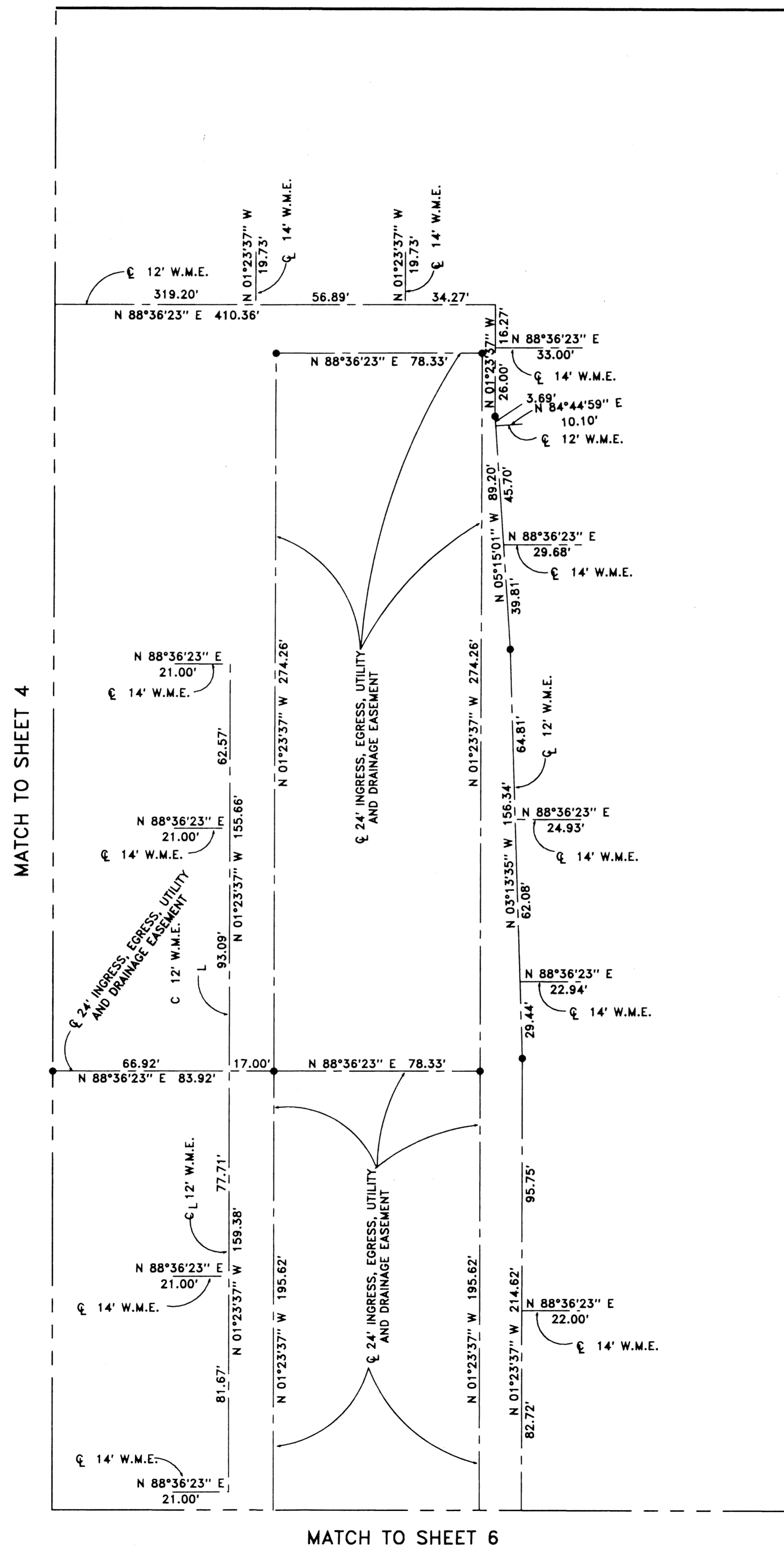
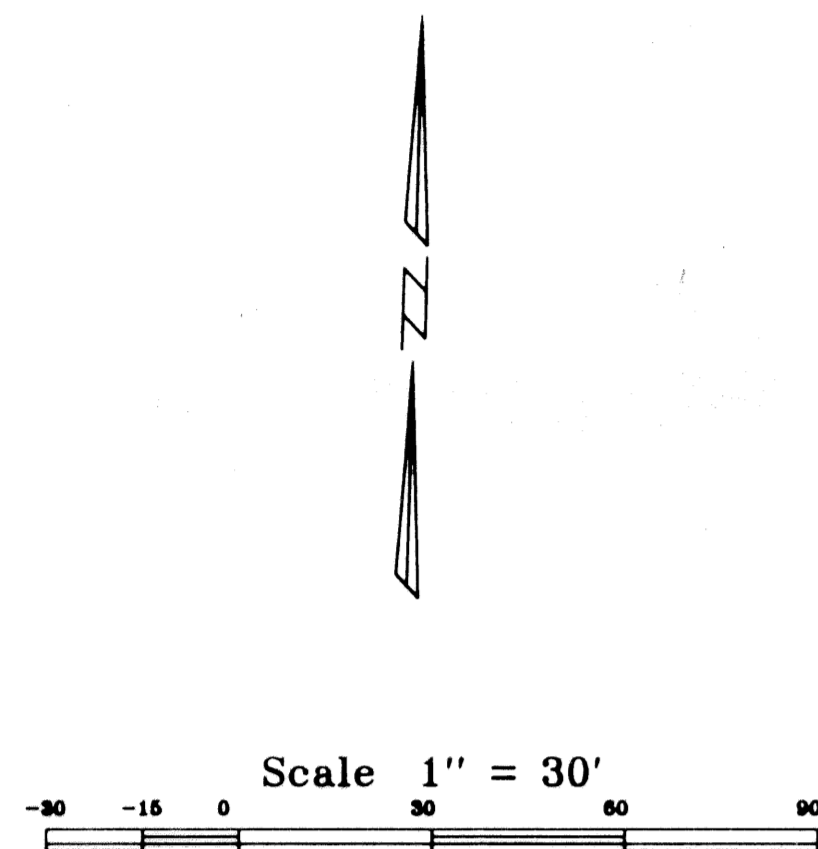


**CITATION CLUB**  
 LYING IN SECTION 25, TOWNSHIP 46 SOUTH, RANGE 42 EAST,  
 CITY OF DELRAY BEACH, PALM BEACH COUNTY, FLORIDA.  
 SHEET 5 OF 7 SHEETS      OCTOBER, 1995

**185**

NOT PLATTED  
 N 88°43'24" E 660.07'

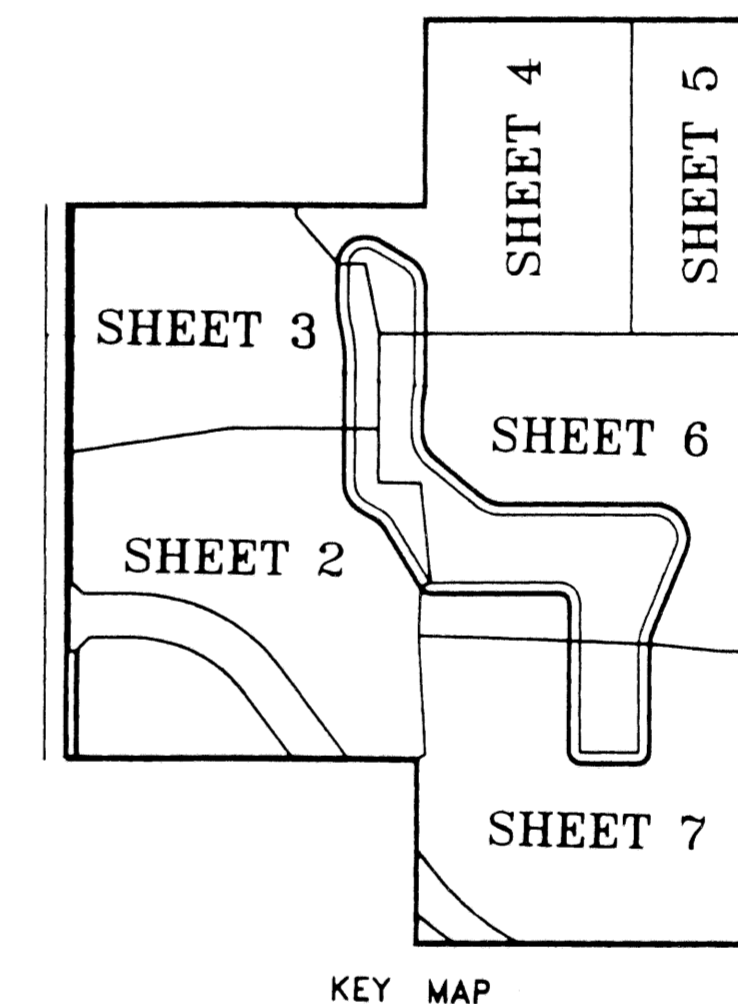
STATE OF FLORIDA  
 COUNTY OF PALM BEACH      SS  
 This Plat was filed for record at \_\_\_\_\_  
 \_\_\_\_ M. This \_\_\_\_ day of \_\_\_\_\_, 19\_\_\_\_,  
 and duly recorded in Plat Book No. \_\_\_\_\_  
 on Page \_\_\_\_\_  
 Dorothy H. Wilken, Clerk of the Circuit Court  
 By \_\_\_\_\_ D.C.



NOT PLATTED

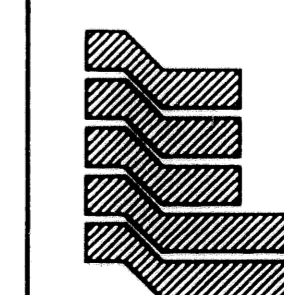
S 01°24'58" E 1682.52'

749.07'



KEY MAP

SUBDIVISION # CITATION CLUB  
 BOOK 76 PAGE 185  
 FLOOD ZONE - FLOOD MAP +  
 QUAD # - ZONING -  
 SE - ZIP CODE -  
 PID NAME CITY OF DELRAY



Landmark Surveying & Mapping Inc.  
 1850 FOREST HILL BOULEVARD  
 PH. (407)433-5405 SUITE 100 W.P.B. FLORIDA

**CITATION CLUB**